

MEDIUM SWING
12 BARS BLUES

SOCIETY RED

DEXTER GORDON

TRANSCRIBED FROM DEXTER GORDON'S "DOIN' ALLRIGHT"
BLUE NOTE 1961 - G.NAUD 2020

A

TP
TS

PIANO

EVEN EIGHTH NOTES

F7 F7(b¹³₉) Bb7 F7

F7 F7(b¹³₉) Bb7 B7 Bb7

3

EIGHTH NOTES SWING

F7 F7 Bbm7

3

C7 ALT. F7 D7 ALT. Gm7 C7 ALT.

B

3

F7 Bb7 F7 F7 ALT.

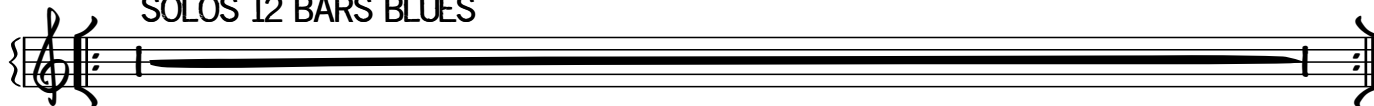
3

F7 Bb7 F7 F7 ALT.

3

Bbm7 C7 ALT. F7 Cm7 F7 Bbm7 Eb7 Abm7 Db7 Gb7 F7

SOLOS 12 BARS BLUES



INTERLUDE

EVEN EIGHTH NOTES → EIGHTH NOTES SWING

F7 F7(b13) Bb7 F7 F7 ALT. F7 ALT.

SOLOS CONTINUE ON F BLUES - AFTER SOLOS A B TO CODA



CODA

Cm7 F7 Bbm7 Eb7 Abm7 Db7 Gb7 F7(#11)