

TOM CAT

INTRO

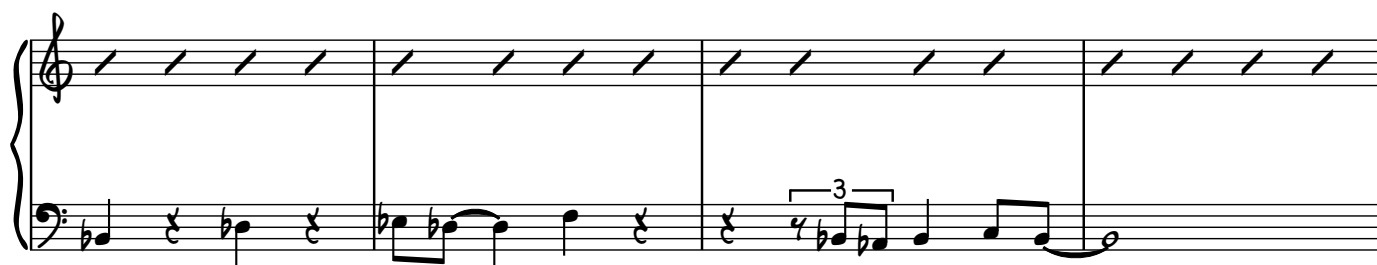
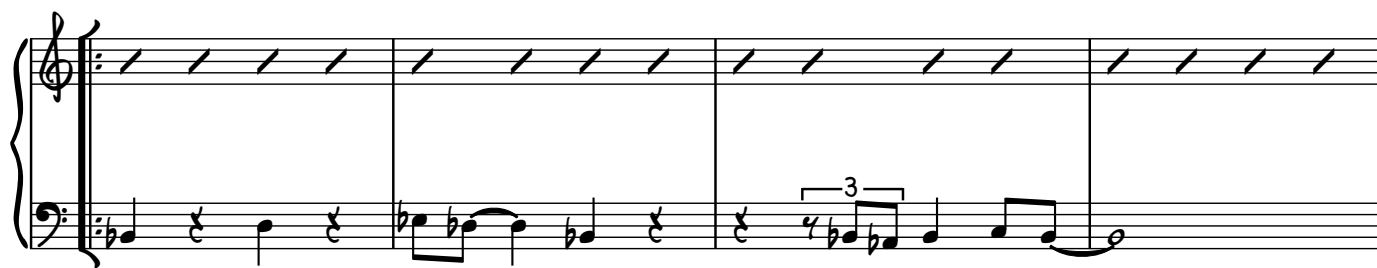
The image displays a musical score for the song "The Rose Tree". It consists of three staves. The top two staves are in bass clef, 4/4 time, and key of B-flat major. The first staff begins with a treble clef and a key signature change to B-flat major. The bottom staff is in treble clef, 4/4 time, and key of B-flat major. The melody is written in the bass clef staves, and the accompaniment is written in the treble clef staff. The melody features a triplet of eighth notes in the final measure of the first two staves. The accompaniment features a triplet of eighth notes in the final measure of the bottom staff.

THEME

THEME

Three systems of musical notation for a piece titled "THEME". The music is written for piano in E-flat major (three flats) and 3/4 time. Each system consists of a treble and bass staff. The first system is labeled "THEME" in a box. The music features a repeating eighth-note pattern in the treble and a bass line with eighth and quarter notes. Trills and triplets are indicated throughout.

SOLOS



AFTER SOLOS GO TO **THEME** THEN FADE OUT ON **INTRO**